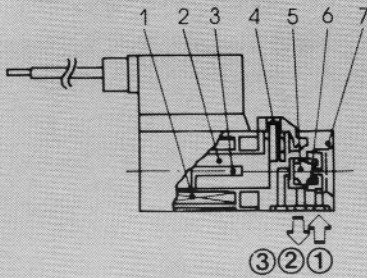


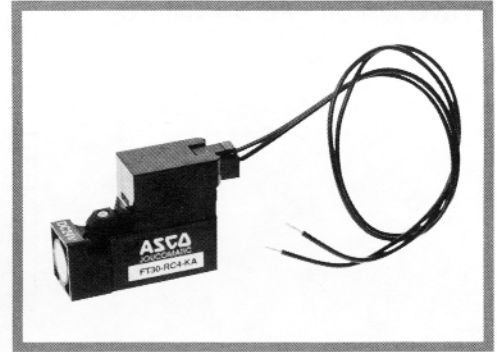
Specifications

Media : Air or inert gas, filtered, lubricated or dry  
 Ports : Subbase Mounted  
 Orifice : Version SC - 1.1mm/.04"  
 : Version RC - 0.8mm/0.3"  
 Flow Coefficient (Cv) : Version SC - .030  
 : Version RC - .021  
 Operating Pressures : 0 to 115 PSI Max  
 Temperature Range : 32°F to 150°F  
 Manual Override : Non-Locking Impulse

Construction



No	Name	Material
1	Coil	
2	Plunger	Stainless steel
3	Spring	Stainless steel
4	Manual Override	Polycarbonate glass fiber 15%
5	Poppet	NBR
6	Spring	Stainless steel
7	Valve body	PBT, charged glass beads 30%



Electrical Characteristics of Solenoid Pilot

Voltages		Voltage Tolerance	Consumption		Insulation Class	Wiring Method
			RC	SC		
AC	24 V, 120 V	+/- 10%	1.1 VA	2.2 VA	F	Plug Connector 12" leads 24 AWG
DC	12 V, 24 V	+/- 10%	1.0 W	2.0 W		

Selection Chart

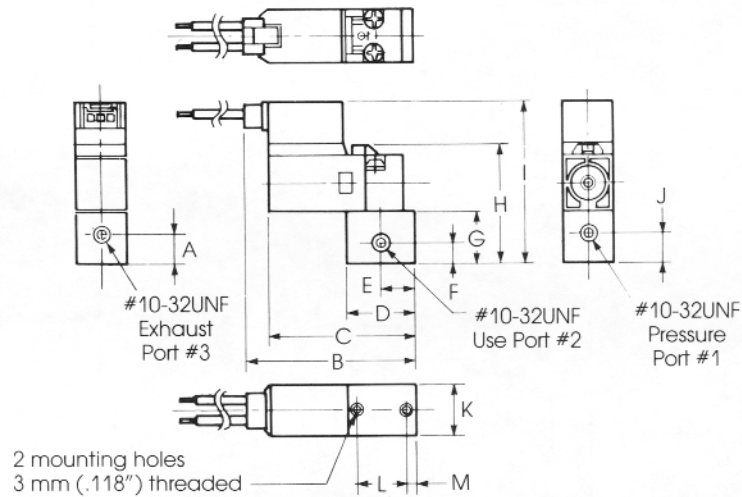
Function	1 = Pressure 2 = Outlet 3 = Exhaust	Type	Pilot	Return	Operating Pressure (PSI)		Model Numbers
					Min.	Max.	
	Normally Closed	Base Mounted	Direct Solenoid	Spring	0	115	See Ordering System

Ordering System For FT30

EXAMPLE: **FT30-RC9C-KA-2SM**

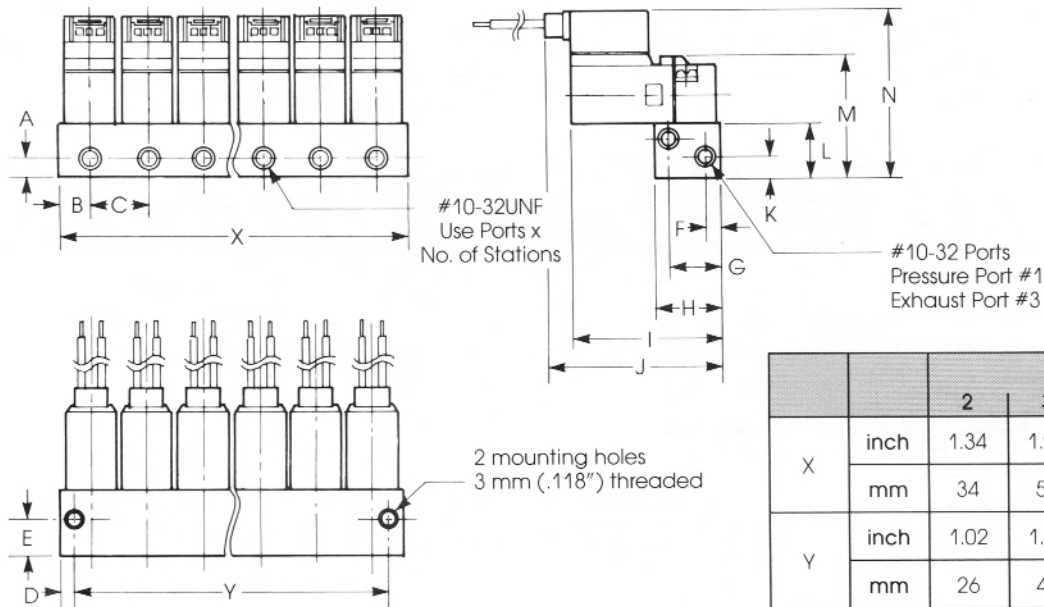
Valve Series	Connector	Subbase	
Version	KA : Plug Connector (standard) <sup>1</sup> KN : Plug Connector with LED KE : Plug Connector with LED and Surge Protection <sup>1</sup> Plug connector is a simple connector with 2 wires x 12" in length, non-rotatable	No. of Subbases	Model No.
SC : Standard Wattage RC : Low Wattage		Voltage	
	9C : 24VAC 9K : 120VAC 4 : 12 VDC 3 : 24VDC	0	Without Subbase
		1	P30
		2	2SM
		3	3SM
		4	4SM
		6	6SM
		8	8SM
		10	10SM
		-	FT30B Blanking Plate

Valve on Single Subbase



	A	B	C	D	E	F	G	H	I	J	K	L	M
inch	.34	1.98	1.71	.79	.39	.24	.59	1.34	1.83	.34	.59	.59	.10
mm	8.7	50.4	43.4	20	10	6	15	34	46.5	8.7	15	15	2.5

Valve on Manifold Subbase



		Number of Stations					
		2	3	4	6	8	10
X	inch	1.34	1.97	2.60	3.86	5.12	6.38
	mm	34	50	66	98	130	162
Y	inch	1.02	1.65	2.28	3.54	4.80	6.06
	mm	26	42	58	90	122	154
Weight in lbs.		.29	.44	.60	.90	1.21	1.52

	A	B	C	D	E	F	G	H	I	J	K	L	M	N
inch	.18	.35	.63	.16	.39	.16	.55	.71	1.62	1.90	.24	.59	1.34	1.83
mm	4.5	9	16	4	10	4	14	18	41.2	48.2	6	15	34	46.5